



Dear parents/carers and pupils,

As we reach the final week of this half term I'd like to take this opportunity to say a huge thank you to all our families, staff and pupils for their adaptability, their kindness and their support. The Risedale Family remains strong and proud of the remote learning service being provided.



In the past 5 weeks we have:

- Supported 165 families by providing Chromebooks
- Delivered live lessons to all of KS4 and introduced core live lessons to KS3
- Ensured that our curriculum supports the progress of all

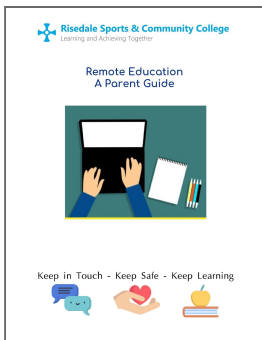
This week:

- 'Live' tutor support sessions twice a week
- Whole school virtual assemblies - first one this week
- Year 7 and 8 live sessions in English, maths and science



Next steps:

- A pupil newspaper full of good news stories
- Year 9 creative and humanities lives



As we move into the next half term we cannot, at this point, be clear about when school will open but we can confidently promise to continue doing our very best for all our families. During these unusual times, working together is more important than ever. We now have a dedicated [Remote Education website page](#) where you can find lots of useful information; including our [Parent Guide](#) to help you support your child with their home learning and a quick 'Top Tips' video that's been sent to pupils which you can also view by following this link: ['Remote Learning Top Tips!'](#)

Please get in touch if you have any questions or need any support - we're here for you.

Stay safe and best wishes,

Mrs Matthewman - Acting Deputy Headteacher

Remote Learning:

As we progress through the term we are offering more and more opportunities for live lessons alongside the quality Google Classroom learning already being provided.

LIVE LESSONS: To know exactly when your child has a live session, simply click on this link: [Live Lesson Timetable](#)





TUTOR TIMES: Tutor time will also be delivered through live sessions twice a week. These will take place at 8.45am, helping our young people to keep to a regular routine and touch base with their tutor. Our focus for this slot is all about wellbeing. We want to make sure that our young people are feeling positive and are able to share any concerns they have.

TIME SPENT ON WORK: Teachers are working really hard to make sure that the work they set is challenging, engaging and of high quality but in these times when we are not in classrooms together, pupils need to focus hard on developing their own skills of independence and resilience. What submitting work actually means is that pupils have completed work to the best of their ability, have taken time to develop and check their answers and have made sure that they have taken the correct amount of time and not rushed. Teachers are returning a lot of work where pupils have completed none of the tasks set or the tasks have been rushed. Having nothing on their to do list can mean they have quickly submitted work without taking enough time or giving enough focus.

School Snapshot:

Below you will find a taster of the approaches being used across school to engage pupils and support them in continuing to keep making progress with their learning.



COMMUNICATIONS: In Modern Foreign Languages (MFL), pupils are continuing to make fantastic progress with their Vocab Express learning and we have also had some amazing Active Learn scores, which grade results for activities from Red to Amber to Green (over 75% correct). What's been great has been the number of GOLD scores, which means that pupils haven't used any tips or 'lifelines' when working through their exercises. Key Stage 3 pupils have also had a go at Duolingo, the world's most popular language-learning app, joining the other 300 million players worldwide!



Félicitations! Herzliche Glückwünsche!

Risedale reading is evolving! At Risedale, we understand the importance of reading so we want to encourage our pupils to read as much as possible. After the half-term your child will be receiving a link and account details to an exciting, new, online digital library called MyOn.



This digital library is going to allow them access to over 5,000 books on a range of topics to read both at home and in school! There are also a range of features exclusive to MyOn such as;

- 24/7 reading availability
- Audiobook readings of the texts
- AR Quizzing opportunities upon reading completion
- Access to a wider range of fiction and non-fiction texts



Keep an eye out for the upcoming announcement for further details. Happy reading!



CREATIVE: The Creative Faculty have been trying to set and deliver as many practical based lessons as possible. In Drama, pupils have been writing and recording vocal performances and in Music, pupils have been using online instruments to access and complete practical tasks. PE have been using PE Picks to choose a workout of their choice: [You can check out PE Picks here](#)



In Food Technology pupils have been working hard baking and cooking at home and sending in photos of their completed culinary delights!



In Art our Y9 pupils have been exploring their own identity in a conceptual art project. Their self-reflective work has been really thoughtful and insightful into their 'lockdown lives' at the moment. Here is Ben Bakani's touching explanation of his 'devices' for his still life photography task:

"I would just like to say my PS4, my headset and my controller are getting me through this time. The fact of not going out and creating memories is horrible but at least we have electronic devices and a big shout out for my laptop the school gave us, very helpful as well to do all our WORK."

HUMANITIES: eHistory is the History Department's new website, the home of the Risedale Family of historians. It has been designed so that KS3 pupils can easily access their remote learning. It can be found here: [eHistory](#) or on the [Student Portal](#) area of the school website. We are looking to eventually expand the website for KS4 pupils.



Each lesson on eHistory is an hour-long. They contain clear step-by-step instructions, with videos as well as quizzes to engage all learners. It's all easy to use, all you need is to login to your school Google account. You can access our lessons on any device. We welcome all feedback on eHistory so we can improve our remote learning provision.

Please contact the History Department if you have any questions about eHistory.



MATHS: The maths department has been experimenting with different styles of learning. These range from 'Pear Deck' to 'Jam Boards'. They enjoyed delivering their first live lesson to Y7 and 8 this week. 7Dunphy got the opportunity to spot the hidden pattern in a game of leapfrog.



SCIENCE: The science team has been busy bringing chemistry to life through their very own recording studio! Mr White has been in school setting up a recording of 'Cracking Alkanes' for Y11 and a 'Changes of State' video for Y10. Keep up the good work in science and watch out for other recordings to support learning next half term.

Love Property supporting Risedale and the Catterick community

A huge thank you to Laura Howey of Love Property North Yorkshire who kindly nominated Risedale to receive a laptop from [Agents Giving](#); a charity which has recently been donating devices to schools. The amazing news is that we were successful and as an added bonus Love Property have kindly donated a second laptop to the school as well! As you can imagine we are over the moon and know that these devices will be an invaluable resource for some of our most disadvantaged pupils.



Mark Kirkbride, Head of DT and Chromebook Project Coordinator at Risedale said: ***"It was lovely to meet Laura today and for the school to receive the two laptops. I know that our pupils will really benefit from their generosity and it's fantastic to be nominated by a local company committed to helping our community."***



Laura also told us that Love Property is available to help any parents/pupils in the community if they do not have access to a printer at home and need to print any work for school. Risedale is happy to help any of our pupils during the week but Love Property might be able to help your family out of school hours and any parents who may have children at primary school. Simply email the work to Hello@lovepropertyuk.co.uk, including your contact details and someone from Love Property will get in touch to arrange a COVID safe pickup or drop-off.

Laura said in her correspondence to Risedale: ***"I would like to take this opportunity to pass on my thanks to your entire staffing team for the absolutely amazing job you have all done throughout this pandemic. Your community is very grateful for your dedication and commitment to our children."***

We can only echo your sentiments Laura and thank you too for all your support. What a fantastic community we have!



February Half-Term Free School Meals (FSM)

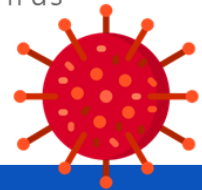


All schools will close as usual over February half-term and are not expected to remain open to vulnerable children and the children of critical workers during that week. Over this period the Government will not be providing FSM vouchers, so instead the school will supply Tesco gift cards to those families who would normally receive this support. The Government FSM voucher scheme will be reinstated after the half-term. Risedale's Family Support Advisor Mr Morley is coordinating distribution by post so if you have any questions please contact him directly morley.g@risedale.org.uk



Changes at Risedale due to Coronavirus

COVID-19
information and updates



Contact Tracing Over February half-term

When the school closes for the half-term holiday at 3pm on Friday 12th February, Risedale's Senior Leadership Team (SLT) will remain contactable via email for critical worker parents and staff to notify them of any positive coronavirus cases where symptoms have developed within 48 hours of being in school.

- If a Key Worker pupil or staff member tests positive for COVID-19, having developed symptoms within 48 hours of being in school please email: COVID@risedale.org.uk to inform the school who will assist in identifying any other pupils or staff who have been in close contact and would be required to self-isolate.
- If a Key Worker pupil or staff member develops symptoms more than 48 hours since being in school, schools are not required to take any action. In this instance, get a test as soon as possible and follow NHS guidance accordingly: [If you're told to self-isolate by NHS Test and Trace](#)

The Department for Education coronavirus (COVID-19) helpline and the PHE Advice Service will remain open over the February half-term to answer any questions you have about coronavirus (COVID-19) relating to education settings and children's social care.

Updates to Lateral Flow Tests in Secondary Schools

Since we originally published our letters to [Parents/Pupils](#) and [Staff](#) on 19th January 2021, the government has changed some of its guidance regarding Lateral Flow Testing in secondary schools. Following new advice from NHS Test and Trace and Public Health England the changes are as follows:

- The need for a **confirmatory PCR test** following a positive result with a lateral flow test in secondary schools and colleges has been **temporarily paused**.



Issue 16: Friday 12th February 2021

- **Daily contact testing has also been paused**, meaning that following a positive lateral flow test result, an individual will need to self-isolate in line with [government guidance](#). Contact tracing will then take place and those identified as being in close contact with any individual testing positive will also need to self-isolate in line with government guidance.

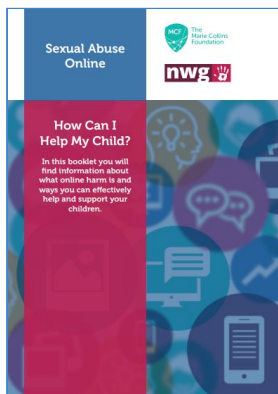
The updated guidance we've received states that these changes are 'temporary' and we therefore ask that all parents and staff who still need to complete the Lateral Flow Test [Consent Form](#) do so but are aware of the temporary changes as outlined above.



NHS
Test and Trace

Children's Mental Health Week 2021

For staff, parents and young people: find useful tools, apps and websites in the Department for Education's comprehensive list of [mental health resources](#) including support for young people who feel particularly overwhelmed by the pandemic.



Sexual Abuse Online

Access to phones, social media and the internet means that young people can communicate with others without those caring for them knowing and this can make it difficult when we want to keep them safe. Online sexual harm is one of the things that you might find most worrying, particularly when your child has more knowledge about this world than you do. The Marie Collins Foundation has produced a helpful leaflet for parents to find information about what online harm is and ways you can effectively help and support your children: [How Can I Help My Child? Sexual Abuse Online](#)

FREE Leadership Training Course for Years 9-11

Are you looking for a challenge to develop your existing skills and start or continue your leadership and volunteer journey? Then why not sign up to [this](#) FREE certificated online leadership training course from North Yorkshire Sport. The course is made up of the following 6 modules each taking around 30 minutes to complete:

1. Communication
2. Teamwork
3. Self-Management
4. Goal Setting
5. Problem Solving
6. Self-belief.



It's a great way to fill in some of your spare time at the moment with a productive training course that will look great on your CV and offer transferable skills for the future. Sign up here if interested: www.yhlearning.co.uk/courses/go-lead