



RISEDALE

SCHOOL

A family of learners

PROSPECTUS

2025 - 2026

Welcome

Lucy Greenwood - Headteacher

As Headteacher of Risedale School, I am proud to work alongside a community of staff, parents and governors who want our pupils to be the very best they can be. I am sure that with your support and our influence our young people can be inspired to achieve great things in their lives. In a rapidly changing world with as many challenges as blessings, our young people need stability, purpose, care, support, direction and the very best teaching possible so that they can achieve their full potential. I am determined that our young people will get these things.

At Risedale we believe in good behaviours that support learning, respect and care for each other regardless of background or belief, and we work to develop these qualities in our young people so that they can become healthy, happy and productive citizens of the future. We aim to develop our pupils' knowledge, expertise and confidence through a broad, balanced and personalised curriculum that excites and engages them and ensures that they leave us with the skills they need to successfully grasp the opportunities the world presents them with. We also enrich this curriculum with varied extra-curricular opportunities and visits.

Our staff foster close relationships with parents, whose support is invaluable - we believe that home and school working together is the key to pupil success. Serving the families of our community and them being proud of the school is important to us, and our special relationship with Catterick Garrison and our military families makes us strive even harder to make our school a place of belonging for all, however long they learn with us. Every pupil, staff member and parent/carer is part of our Risedale Family. We are committed to strong links with other stakeholders including schools, the military and civilian partners, so that Risedale pupils can flourish.

I am proud of our Risedale Family, as are our staff. Our pupils are proud to be Risedale. We welcome visits to the school by parents of prospective pupils at any time where you can see us all at work. If your child is not yet with us, come and see us in action!



RISEDALE SCHOOL

Hipswell
Catterick Garrison
North Yorkshire
DL9 4BD

Tel: 01748 833501 | Fax: 01748 836149

Email: enquiries@risedale.org.uk | Website: www.risedale.org.uk

Facebook / Instagram / YouTube: @RisedaleSchool @RisedaleFamily





OUR VISION & VALUES

Our aspiration is that every pupil and staff member is supported to be the **BEST** version of themselves.

Members of our Risedale family will feel a strong sense of belonging and accomplishment as a direct result of attending our school. They will accumulate knowledge, cultural capital and social skills, such as empathy and kindness, enabling them to thrive in society and enjoy healthy **RELATIONSHIPS**. All our pupils will make good progress from their starting points.

At whatever stage of their education Risedale pupils leave us, they will be well-equipped to take the next steps on their journey to becoming a **RESPONSIBLE**, **RESPECTFUL** and **RESILIENT** citizen who can embrace change and learn from mistakes.

We are 'The Risedale Family' and together we are 'A family of learners'.

Teaching and Learning

At Risedale we strive to provide consistently excellent teaching. The school works hard to provide an exciting, challenging and stimulating environment for learning. We want to excite and engage our pupils as we go on a learning journey together.

Our curriculum is based around 5 key 'Pillars of Success'



Our teachers are passionate about sharing the importance of developing these five key traits so that pupils are ready for a world beyond the classroom.

Our emphasis is on challenge. We want pupils to be pushed and supported to go beyond what they believe is possible. We work hard as professionals to make sure that pupils' learning experiences are the best they can be. We keep abreast of all current educational thinking and make sure the pupils are involved in this learning dialogue.

We endeavour to support pupils to be highly literate and numerate individuals, confident of accessing texts and solving problems in the classroom and beyond. Pupils form part of a Teaching and Learning Community, working together with staff to improve provision in classrooms and learning environments across the school.

Every individual is entitled to a broad, balanced, relevant, coherent, progressive and differentiated curriculum. At all stages of development, learning is structured and sequenced and should be a stimulating, enjoyable and worthwhile experience in its own right. Equality of access and opportunity underpins our provision for all. Our curriculum is not simply about the subjects our pupils study, but the people they will develop into and the world they will influence.

Years 7-9: The school offers an exciting and effectively sequenced curriculum at Key Stage 3 that both challenges and prepares our pupils for selecting options at Key Stage 4. Every year we assess the quality of provision and are constantly seeking to improve the range of subjects and opportunities for our young people.

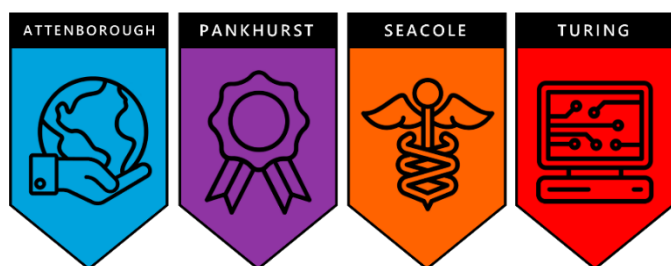
Years 10-11: The school curriculum reflects the diversity of pupil needs; a wide range of subjects and programmes provides strong progression routes to further education courses. Building on the foundations at KS3, KS4 prepares pupils not only to succeed academically but also to be ready to face an ever-changing world. Our pupils are supported every step of the way to help them with their personalised learning journey, to ensure a positive future for all.

Facilities and Resources

The school shares its site with Hipswell C of E Primary School and stands within its own pleasant grounds, incorporating two hard-court playing areas.

We have extensive sports facilities separate from the school campus. These include football, hockey and rugby pitches. In the summer months, we have 400m track, long, triple and high jump areas, shot, discus and javelin throwing areas as well as rounders and cricket pitches.

Although built at different times, the school's buildings are well maintained. A programme of remodelling and refurbishment over the past few years has provided us with excellent facilities for all curriculum areas.



House System and Rewards

At Risedale, we celebrate the success of all our pupils who strive to achieve their best in all aspects of life. The House System creates a sense of community and promotes healthy competition among pupils and staff. Pupils wear a tie in their house colour, generating a strong sense of identity and belonging. The House System supports our pupils to develop as confident, resilient, compassionate and successful individuals as outlined in our 5 key 'Pillars of Success'.

Pupils are rewarded for exceptional work in the classroom and for taking part in inter-house competitions and extra-curricular activities, as well as for contributing to the life of the school and the wider community. Stamps are awarded to individuals and logged by the tutor on BROMCOM; pupils and parents/carers can keep track of their reward points via the MCAS App.



Cutting-edge technology and specialist facilities:

- We have full Wi-Fi Cloud coverage throughout the school
- Dedicated IT suites complete with network facilities and Chromebooks to support learning
- Virtual Reality headsets
- Drones
- Photography studio
- Computerised laser cutters
- 3D printing and computer embroidery
- An extensive Library Resource Centre
- Reprographics Centre
- Pupil Support and Development area
- An on-site School Counsellor
- The Hub – a space for transition
- Fitness suite
- Gym and Sports Hall
- Canteen offering first-rate food and refreshments

Working Together

Home School Partnership Agreement

For pupils to achieve success at school, we believe it is important that parents, pupils, and school are able to work together, with each party having an equally important part to play in the partnership. To cement this partnership, pupils and parent(s)/carer(s) sign a Home School Partnership Agreement (in line with DfE policy).



Contact with Parents/Carers

A pupil's time at Risedale School is important and should be a purposeful and happy experience. We are committed to making our school a welcoming and productive place where everyone feels safe and valued and can achieve their best. We, therefore, encourage both pupils and parents to keep us informed of any matters which may affect wellbeing and achievement. Similarly, the school will contact home if the need arises.

Communication with parents is an important aspect of our work in the school; personal tutors and subject teachers are normally the first point of contact for discussions regarding pupil welfare and academic progress.

We have an online portal called [My Child at School \(MCAS\)](https://www.risedale.org.uk/MyChildAtSchool) which enables parents to view their child's performance at school in real-time via the web. This facility allows access to attendance, assessment and behavioural data and is a place to view academic and examination timetables, as well as for booking appointments for Parents' Evenings and consultation sessions.

We communicate regularly with parents in a number of ways; by post, email, telephone and text. In addition, lots of information can be found on our website and via our social media links:

Website: www.risedale.org.uk
Facebook / Instagram / YouTube:
[@RisedaleSchool](https://www.facebook.com/RisedaleSchool) [@RisedaleFamily](https://www.instagram.com/RisedaleFamily)



Personal Tutorial System

Pupils are placed in tutor groups on entry into school. We put great trust in our personal tutor system to ensure that parents/carers have an easy first port-of-call for advice, enquiries and contact for all matters. The personal tutor is seen as a vital figure in the learning process, monitoring, mentoring, and target-setting for pupils to improve their performance. The personal tutor also keeps a careful eye on each individual's general welfare, attendance, punctuality and positive attitude.



Attendance, Absence and Punctuality

We all know that good attendance matters and that regular school attendance maximises learning potential. Pupils who regularly attend school make better progress socially and academically. We want to give every young person the chance to be successful and good attendance is key to this. Regular and prompt attendance forms the basis of our [Attendance Policy](#).

**Good attendance leads to good progress and achievement.
Always aim for 100% attendance.**



It is the responsibility of the parent/carer to make sure their child is punctual and attends school every day. We monitor all pupils' attendance and punctuality closely every week.

Holidays should only be taken during school holidays. Under DfE guidance, the Headteacher may only grant a leave of absence in exceptional circumstances.

Reporting an absence: If a pupil is unwell and cannot attend school we ask that a parent/carer inform the school and leave a message before 9:00 am on each day of absence. To do this, parents/carers can either telephone the school on 01748 833501 and select option 1 to report an absence OR send an email to absence@risedale.org.uk with the necessary information.

Transport

Transport for all pupils in Years 7-11 who live more than three miles from the school is provided by North Yorkshire County Council, which issues bus passes.



Where families live outside our recognised catchment area, they may be eligible for financial assistance and transport. For further information please contact North Yorkshire Council 01609 533693 or visit <https://www.northyorks.gov.uk/education-and-learning/school-and-college-transport>



ParentPay



Uniform

At Risedale we believe that our uniform helps pupils to feel part of the school. The school uniform and PE kit is a requirement for every pupil and is available to purchase from www.school-shop.co.uk

SCHOOLSHOP

Catering

At Risedale we have a dedicated team, who work hard to produce a wide variety of meals for our pupils and staff, freshly cooked each day. Ingredients are sourced locally from around the Yorkshire region and offer a healthy, balanced and varied diet.

The school operates a 'cashless system' for school meals, where pupils use money to top up their balance in school or parents can top-up from home using ['ParentPay'](#) online. By using the ParentPay facility parents are also able to check their child's balance and see what they have purchased to eat.

Medical Arrangements

All parents will be asked to provide medical information about their child during the admissions process and the school requests that parents ensure any changes are notified to the school.

The school aims to have more than one emergency contact number on file for each pupil, this means we respond quickly in case of an emergency or illness.

Whilst the school has several qualified first aiders who can deal with emergencies, we do not have a school nurse based on site. Pupils who report feeling ill will be assessed and, where necessary, parents will be contacted, or an ambulance called.

Contacting Home

Any pupil wishing to contact their parent during the school day must ask the office staff to call on their behalf and likewise, we ask parents to ring the office if they wish to contact their child. This ensures that the school is kept informed and able to help pupils/parents in need without disrupting teaching.

Enriching Experiences

The school recognises the need to promote higher levels of achievement in pupils of all abilities. All members of the school are encouraged to recognise the value of personal achievement and to have a positive attitude towards the promotion of talent and the benefits that this can bring for both the individual and the community. We recognise and promote the abilities of our most able pupils and those with exceptional talents.

We offer:

- A range of diverse and imaginative House tournaments and competitions
- A wide variety of sporting activities, including opportunities to represent the school at area, county and national level
- An extensive programme of lunchtime and afterschool clubs/activities
- University visits, fieldwork trips, cultural excursions and Outdoor Education residentials
- Opportunity to join the Duke of Edinburgh's Award Scheme
- Participation in local and national competitions

Ambassador Programme of Pupil Leadership

Pupil leadership links reinforce the 5 pillars of our curriculum that contribute to pupil achievement. Learning is not something that is done to us, it is a collaborative process with adults and young people working in partnership. We know that the more engaged our pupils are in school life the more likely they are to succeed. The Ambassador Programme at Risedale School involves pupils in conversations about mental health and diversity and allows them to take an active role in supporting others' learning, shaping the school, caring for our planet, supporting our service pupils and contributing positively to our community. We want as many pupils as possible to be able to take on a leadership role and in doing so become ambassadors for the school and run their own School Council effectively.

Senior Pupil Ambassadors

This is the most senior pupil responsibility in the school. At the end of Year 10, pupils are invited to apply to join the Senior Pupil Ambassador Team. All our ambassadors are positive role models for younger pupils; they undertake duties, listen to, and support fellow pupils and provide a pupil voice to the Senior Leadership Team. They also receive training to develop their leadership skills. Our Senior Pupil Ambassadors can be identified by a coloured lanyard.

Careers Education, Information, Advice and Guidance

At Risedale School, we provide a comprehensive careers education programme for all pupils in Years 7-11, integrated into the school curriculum through tutor time. Our aim is to ensure a smooth and profitable transition from school to adulthood by fostering essential personal, transferable, and employability skills.

Pupils actively engage in activities that build self-awareness, confidence, teamwork, and career opportunity awareness. This culminates in crucial decision-making strategies before option choices in Year 9 and Post-16 transitions in Year 11.

A key feature is our personalised support: every pupil in Years 8-11 is entitled to an annual one-on-one interview with our Careers Adviser. This adviser is also available for consultations with parents.

As part of the York and North Yorkshire Careers Hub, we maintain high standards of careers guidance, fulfilling our statutory duties in line with Department for Education (DfE) guidelines. Our programme is led by Mrs H Porritt, our Careers Leader.

**York &
North Yorkshire**
CAREERS HUB

**THE CAREERS &
ENTERPRISE**
COMPANY

Extra-Curricular Activities for Everyone

At Risedale, pupils have the opportunity to participate in a variety of activities, clubs and leadership roles. Together we are **#TeamRisedale**

Activities and Clubs

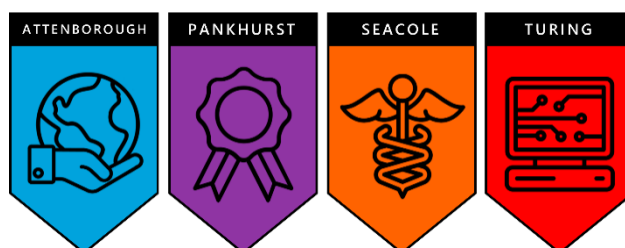
- Art and cultural visits to galleries
- Athletics
- Badminton
- Basketball
- Ceramics
- Cheerleading
- Chess Club
- Cricket
- Cross-Country
- Charity fundraising
- Duke of Edinburgh's Award
- Dodgeball
- Enterprise
- Field trips
- Football
- Gymnastics
- Handball
- Health and Fitness
- Inter-form/Inter-house competitions
- LGBTQIA+ Club
- Peripatetic music lessons
- Photography Studio
- Poetry / writing workshops
- Productions / seasonal shows and events
- Recording Studio / Media Centre
- Rounders
- Rugby
- Science Club
- Softball
- Study clubs and revision sessions
- Tchoukball
- Tennis and Table Tennis
- Textiles Club
- Theatre visits
- Trampolining
- Ultimate Frisbee
- Work with pupils from local primary schools

Sport

The school offers extensive extra-curricular sporting opportunities. There are also inter-school fixtures with Hambleton and Richmondshire Area Sport Organisation and North Yorkshire Schools competitions. Competitive inter-school fixtures take place regularly throughout the year alongside our extra-curricular activities programme, where pupils are able to participate in recreational/leisure clubs.

Pupil Leadership Roles

- Lead and Deputy Senior Pupil Ambassadors supported by the Senior Pupil Ambassador Team
- Pupil Ambassador Teams, including Mental Health Ambassadors, Pride and Diversity Ambassadors, and Service Pupil Ambassadors
- House Captains
- Pupil Librarians
- Literacy Leaders
- Club Captains
- Sports Coaching



Learning Support

Pupils with Special Educational Needs and Disabilities (SEND)

Our core belief is in providing a broad and balanced curriculum that nurtures the potential of every child. We are dedicated to ensuring all pupils receive the support they need to thrive, recognising that some may require additional tailored assistance to reach their personal BEST.

We have extensive experience and expertise in supporting a diverse range of SEND, including:

- **Speech, Language and Communication Needs**, such as Autism Spectrum Disorder (ASD)
- **Cognition and Learning Needs**, including Specific Learning Difficulties (SpLD)
- **Sensory and/or Physical Needs**
- **Social, Emotional and Mental Health Difficulties**

Our school is designed to be inclusive to everyone, featuring lifts and stairlifts throughout to ensure easy and independent movement for all pupils.

Equal Opportunities

It is the school's vision to provide an environment in which discrimination in all its forms is deemed to be unacceptable and to treat everyone equally, irrespective of their gender, race, ethnicity, belief, age, mental or physical health, or sexual orientation. Tackling discrimination and promoting healthy relationships with people is wholly consistent with the school's desire to be fully inclusive as outlined within our mission statement.

Child Protection

The school is committed to ensuring the welfare and safety of all children in school. All North Yorkshire schools, including Risedale School, follow the North Yorkshire Safeguarding Children Partnership procedures. The school will, in most circumstances, endeavour to discuss all concerns with parents about their children. However, there may be exceptional circumstances when the school will discuss concerns with Social Care and/or the Police without parental knowledge (in accordance with Child Protection procedures). The school will, of course, always aim to maintain a positive relationship with all parents. The school's Child Protection Policy is available on our website or on request.

Privacy Policy

General Data Protection Regulation (GDPR)

Our Privacy Policy/Notice provides information for parents/carers and pupils regarding the purposes for which personal data may be collected, held and shared. A copy of this notice can be found in the [policies](#) section of our website.



Joining The Risedale Family

Transition: Moving from Year 6 to Year 7

Our staff work closely with local primary schools throughout the year to ensure an easy and smooth transfer to secondary school. Open Evenings and Taster Days are held annually for the incoming Year 6 pupils.

At Risedale, The Hub provides a nurturing environment where pupils are supported with transition so they feel happy, safe and confident to move on to the next steps in school and life. More information available on our [website](#).



Admissions: How to Apply

For information on applying for a place for your child at Risedale School, parents/carers are asked to follow the [North Yorkshire Council Admissions Procedure](#). Information can be found by contacting the NYCC Education Office on 01609 533679 or by visiting www.northyorks.gov.uk/school-admissions

We welcome all applications to the school and would advise parents living inside and outside the catchment area to consider placing Risedale School as their FIRST CHOICE. We welcome visits to the school by parents of prospective pupils at any time. For further information regarding the school please do not hesitate to contact us directly on 01748 833501 or email enquiries@risedale.org.uk



Pupils with Special Educational Needs & Disabilities (SEND)

Risedale welcomes all pupils and endeavours to ensure that appropriate provision is made to cater for their needs. All pupils with SEND play a full part in the daily life of the school and are encouraged to join in all activities. If additional provisions are necessary our parents/carers are always informed and we would ask parents to inform us of any special considerations needed for their child.



RISEDALE SCHOOL

Hipswell - Catterick Garrison - North Yorkshire - DL9 4BD

Tel: 01748 833501 | Email: enquiries@risedale.org.uk

Website: www.risedale.org.uk

Facebook / Instagram / YouTube: @RisedaleSchool @RisedaleFamily